

## MAGC Hosts Legislative Luncheon to Advocate for Gifted Education at the Capitol



**Senator Mike Chaney, Vicksburg, Chair of the Senate Education Committee**

Mississippi Association for Gifted Children recently hosted a luncheon for members of the state legislature and the Mississippi State Department of Education. At the luncheon, MAGC president Margaret Snider and other executive board officers discussed the history and importance of education for gifted children in Mississippi and expressed support for full funding of the Mississippi Adequate Education Program (MAEP) and full support for programs for gifted children in Mississippi schools. Mississippi is recognized nationally as a leader in the field of education for the gifted. Founded by parents and teachers in 1974, **Mississippi Association for Gifted Children** is a non-profit organization that serves as a public advocate for gifted children and youth in the state of Mississippi. For more information on the luncheon, see the letter from our president on page 2 of Concepts.

If you are interested in advocating for gifted education, or simply want to contact your local and state representatives, their names and contact information are available on the Mississippi Legislature's web-site. The web address is [www.lis.state.ms.us](http://www.lis.state.ms.us). Members of the House and Senate education committees are listed below.

### House Education Committee

Cecil Brown—Chairman Wanda Jennings—Vice-Chairman		
Noal Akins	Brian Aldridge	Billy Broomfield
Kelvin Buck	Clara Burnett	Credell Calhoun
Virginia Carter Carlton	Bryant W. Clark	Alyce G. Clarke
Reecy L. Dickson	Joey Fillingane	Herb Frierson
Esther Harrison	Gregory Holloway	Mike Lott
J.B. Markham	Rita Martinson	John Mayo
Pat Montgomery	Leonard Morris	David W. Myers
Deryk R. Parker	John R. Reeves	Ray Rogers
Sara R. Thomas	Greg Ward	Joseph L. Warren
Tom Weathersby	May Whittington	

### Senate Education Committee

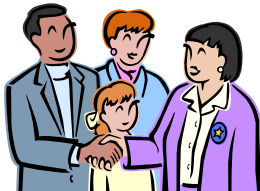
Mike Chaney, Chairman	
J.P. Wilemon, Jr., Vice-Chairman	
Hob Bryan	Terry C. Burton
Videt Carmichael	Eugene S. Clarke
Alice Harden	Gary Jackson
David Jordan	Tom King
Dean Kirby	Alan Nunnelee
Joseph C. Thomas	Gray Tollison
Bennie L. Turner	

## Day at the Capitol

Thursday, March 1, 2007

**Come to the State Capitol to show your support for gifted education in Mississippi!**

Families are invited to visit the capitol and tell their legislators how important gifted education has been to their lives, and thank them for supporting and funding gifted education in our state. If you are interested in participating in this program, contact Kathy Henry at [kathy.henry@rcsd.ms](mailto:kathy.henry@rcsd.ms) or 601-992-4987.



## In This Issue ...

From the MAGC President	Page 2
Bookshelf	Page 4
NASA Space Place	Page 7
Happenings at the Karnes Center	Page 8
Hall of Honors	Page 9
Nicholas Green Application	Page 10
Summer Scholarship Application	Page 11
Teacher Grant Application	Page 12
Call for Proposals	Page 13

---

## From the MAGC President

---

Have you wondered “Where is MAGC today?” or “How is MAGC working for the future of gifted students?”

Rest assured that the work and commitment of the MAGC Executive Board members, our Advisory Board, and the local affiliate groups is grounded for future success in advocacy efforts for the gifted children of this state. MAGC is keeping abreast of political and legislative issues and building rapport between our organization and those who have influence on the education of gifted children.

On January 18, 2007, an Annual Advocacy Luncheon was held at The University Club in Jackson. Joining MAGC’s Executive and Advisory Boards were members of the State Department of Education and its State Board, representatives from the Office of the State Auditor and the Secretary of State, Senator Mike Chaney from Vicksburg, Senator Tom King from Petal, Senator Richard White from Terry, Senator J. P. Wilemon from Belmont, Representative Wanda Jennings from Southaven, and Representative Brian Aldridge from Tupelo. Gratitude should continue to be conveyed to these people for their interest in and work for gifted children. At this luncheon, many shared stories of how our programs have affected the lives of gifted students. On our Executive Board we have a teacher *and* one of her former

students who is now a teacher of the gifted! What great commitment this shows!

On Thursday, March 1, 2007, gifted students and parents will participate in our Day at the Capitol. Student work will be displayed in the rotunda of the Mississippi Capitol Building in Jackson and families will contact their legislators to express appreciation for their state’s funding for gifted education. Legislators want to hear personal stories about the positive impact the gifted funding is having for our students. MAGC will serve coffee and muffins to the legislators from 7:30 until 10:30 on the first floor of the Capitol and participants will visit the galleries from 10:30 until 11:30. If you are interested in participating in this event, contact Kathy Henry at [kathy.henry@rcsd.ms](mailto:kathy.henry@rcsd.ms) or 601-992-4987.

Rest assured that your MAGC board members are dedicated to education and believe in the future of a Mississippi led by our gifted students. Won’t you give your time and resources to present at the MAGC Conference in October? Now is the time to begin thinking of ways your expertise can be shared with your colleagues. Won’t you agree to serve this organization in a leadership role? Now is the time to let someone know of your willingness. Your ideas, suggestions, and feedback are valued. Please do not hesitate to contact me by email with your questions, concerns, and comments.

Margaret Snider

# IT’S TIME!

MAGC members.....IT’S TIME!

It’s time to send in your proposal for presentation at the 2007 MAGC conference. I know many of you have the proposal typed up and just haven’t put it in the mail. Don’t keep me in suspense any longer!

The state of Mississippi is blessed with so many creative, enthusiastic, dedicated, and GIFTED teachers of the gifted. How about sharing some of that creativity, enthusiasm, dedication, and giftedness with your colleagues? Some categories of presentation are listed below. I look forward to hearing from many of you very soon. See you in September!

- *Social/emotional needs of gifted students*
- *Creativity and/or the arts*
- *Differentiating curriculum and instruction*
- *Special populations*
- *Evaluating student progress*
- *Developing leadership*



Teresa Mosley  
MAGC President-Elect

## Jake Haley receives Nicholas Green Distinguished Student Award

On Friday September 29<sup>th</sup> at the annual conference of the MAGC, Jake Haley, a 7<sup>th</sup> grader at Kossuth Middle School in Alcorn County, was awarded the 2006 Nicholas Green Distinguished Student Award. These awards are presented by the National Association for Gifted Children and are designed to recognize excellence in young children. The awards, which include a \$500 U.S. Savings Bond, may be made to students in grades 3-6 who have distinguished themselves in academics, leadership, or the arts.

Jake Haley is the son of Jeff and Jan Haley of Kossuth, MS. His award is given for excellence in the arts. Jake’s artwork has been featured at the annual conference for the MS Reading Association, where he dedicated his drawing of the Biloxi lighthouse to the gulf coast region devastated by hurricane Katrina calling it a “beacon of hope.”

The Nicholas Green Distinguished Student Award program was established through funds provided by Maggie and Reg Green of Bodega Bay, CA to honor the memory of their seven-year-old son, Nicholas who was killed in a drive-by shooting while vacationing in Italy in 1994. The Nicholas Green Scholarship Foundation has already awarded scholarships to high-ability high school and college students to enable them to advance their education. The Greens started the Distinguished Student Awards because they felt it was important to recognize the gifts and talents in children who are now at the age that Nicholas was when he died.

## Study Targets Relationships between Parents and Gifted Youth

Parents and their gifted children are being invited to participate in a research project that seeks to better understand the relationships between parents and gifted youth. The study is being conducted by Lisa White, a doctoral candidate at the California School of Professional Psychology as part of her degree requirements.

In order to participate in this study, students must be in grades 7, 8, 9, or 10. They must also have been identified as qualifying for a gifted and talented program either in a school or as part of a class, summer course, etc. Participation in this study will take approximately 1—1 1/2 hours. The parent and student will be asked to fill out questionnaires

that ask questions about family interactions. These questionnaires are available on-line or a pencil-paper measures. All information given is strictly confidential and will only be seen by Ms. White and her dissertation supervisors. A summary of the general results of the study will be available to you after the research is finished, upon your request. However, no information will be given about any individual child, parent, or family's results.

If you wish your family to take part in this study, please go to [www.giftedfamilies.com](http://www.giftedfamilies.com). If you have any questions or concerns, please feel free to contact Lisa White at [lisa@giftedfamilies.com](mailto:lisa@giftedfamilies.com).

## Summer Program at Alabama School for Fine Arts

The Alabama School for Fine Arts has received grant funding to host a residential summer program for under-represented gifted students from a tri-state area. Students who are currently in grades 6-8 from Alabama, Mississippi, and Louisiana are encouraged to apply. The program will be

held June 3-6 in Birmingham, AL and will focus on mathematics, science, and technology. There is no cost to attend. For more information, please contact Hungsin Chin by phone at 205-252-9241 or by e-mail at [hchin@asfa.k12.al.us](mailto:hchin@asfa.k12.al.us).

## Summer Opportunities Available at St. Andrew's

Saint Andrew's Episcopal School in Jackson is hosting a number of summer enrichment programs. Some of them are listed below. If you are interested in participating in or would like information about any of these programs, contact the school at (601)853-6000 or visit their web-site at <http://gosaints.org> Scholarships for this and other summer programs offered in Mississippi are available through MAGC. See page 11 of this issue of Concepts for an application form.

### Gifted Exploration, June 18-22

This class for rising 2nd—5th graders will guide gifted students in the exploration of robotics, visual arts, mathematics and science. Students must meet one of the following criteria to be accepted into the program: IQ of 120 or above; 90% or higher (national norms) on a standardized test; or teacher

recommendation of academic ability if testing is not available. Students must bring their own lunch daily. A snack will be provided. The cost is \$225. Contact [murrayb@gosaints.org](mailto:murrayb@gosaints.org) for more information.

### USA Chess, June 4-8

USA Chess is a national chess camp organizer. Students in grades K-12 are accepted on all chess ability levels from beginning to advanced. Students may attend full or half day sessions. Campers will receive a t-shirt, chess board and pieces, trophy, certificate of achievement with a camp photo, chess notation book, and a work folder. The cost is \$234 for half days and \$374 for full days. For more information or to register for this camp visit [www.chesscamp.com](http://www.chesscamp.com) or call 888-65CHESS.

## Creative Kids Magazine Publishing Student Work

*Creative Kids*, a national magazine by and for kids is currently seeking student work for publication. *Creative Kids* is published by Prufrock Press and is looking for submissions from students between the ages of 8 and 16.

Students can submit their work in the following categories: prose, poetry, essays, games, and artwork. The magazine is especially interested in seeing students write about their classmates who have made a difference in their community. Student work is also featured in the "Write On" section, where students write opinion essays on the topics that matter most to them.

Students whose work is accepted for publication receive a complimentary copy of the magazine in which their work appears.

All submissions must be accompanied by a self-addressed stamped envelope and a cover letter with the student's name, mailing address, school, grade, and date of birth. For more information about submission guidelines, please visit the Prufrock Press web site at [http://www.prufrock.com/client/client\\_pages/prufrock\\_jm\\_ck\\_wg.cfm](http://www.prufrock.com/client/client_pages/prufrock_jm_ck_wg.cfm) or contact the *Creative Kids* editor, Lacy Elwood, at [lwood@prufrock.com](mailto:lwood@prufrock.com).



## The Bookshelf

By: Harriet Whitehouse

### ***THE MIRACULOUS JOURNEY OF EDWARD TULANE***

by Kate DiCamillo

Once upon a time there was a china rabbit whose name was Edward Tulane. He was a large china rabbit, with a china head, torso, arms, and legs, jointed and bendable. Edward belonged to a young girl named Abilene, and thus the story begins.....

Edward thinks most highly of himself, taking for granted the love showered upon him by Abilene. Only Abilene's grandmother sees clearly, deep into the almost non-existent heart of Edward. Abilene herself sees only the beauty of Edward, unaware that he is an incredibly selfish rabbit at heart. In a masterful interplay of realism and fantasy, Edward is both a toy and a sentient being, counting on the presence of Abilene for his happiness. Abilene promises him in their typical routine that she will always return for him, no matter where she is, and thus leaves for school daily, never dreaming that her promise may become almost impossible to fulfill.

On one fateful day, when Abilene and her family are aboard an ocean liner on the way to Europe for several months, Edward, through the cruel actions of others, falls overboard and appears lost forever. Thus begins an account of Edward's journey, strange and convoluted. After lying silt-covered on the ocean bottom for countless days, he is caught in an elderly fisherman's net. The fisherman and his wife

rescue Edward, and he becomes their darling until their callous daughter casts him into the city dump. That erstwhile self-congratulatory rabbit now, in his shabbiness, feels the first tendrils of love uncurling from his heart for the elderly couple who loved him. From the dump, Edward becomes, in turn, a scarecrow-rabbit, a hobo's companion, the companion of a small girl who dies holding him, and a street musician's puppet. He grows shabbier, more abused, more lost, and yet his spirit becomes miraculously deeper, involved, in love with living, more considerate, kinder, and, ultimately, selfless. In tones which reminds one of Dickensian themes, Edward's life spirals to the very bottom of the pit of perdition when, in an act of cruelty, his china head is smashed, and Edward's world goes black.

Edward is repaired and restored by a doll conservator and placed for sale in his shop. ....Here the tale turns full-circle, as into the shop comes Abilene, now an adult with a little girl of her own. Now, Abilene can keep her promise: "I will come back for you."

From a simple story of a lost-and-found rabbit, Kate DiCamillo has woven a tale of enormous dimensions that proclaim the power of love, of promises kept, and of redemption. One can read this story on many levels: an adventure story, a story of hardship and return, or a tale of the redeeming power of love. I think that a child who is not yet ready to see past the adventure story will, without realizing, absorb the deep message of *The Miraculous Journey of Edward Tulane*, and older children and adults will find their lives enriched and embroidered with incredible beauty in reading the novel. Love is the ultimate message. To quote the Beatles, *Love is all you need!*

## Stand Up for Mississippi's Brightest Join MAGC Today!

MAGC provides...

- An annual conference for teachers and families of gifted children
- Student scholarships and teacher grants
- Workshops and special training sessions for parents and teachers
- Opportunities for teachers and parents to network and form support groups
- Assistance to local parent affiliate groups who support gifted education in their communities
- Publications and information for teachers and families of gifted children

\$25 pays for membership  
from Jan. 1—Dec. 31

Visit the MAGC web-site to  
download an application!  
<http://www.muw.edu/magc/membership.htm>



## Outdoor Learning Lab Workshops

One day workshops are available to teachers who want to be certified facilitators of Outdoor Math Labs, Environmental Discovery Labs, and a Low Ropes Challenge Course.

For FREE registration: call 662-241-6101

Curriculum guides available for purchase

.5 CEUs available—lunch provided

Dates: March 9 & April 13 (choose one)

Time: 8:30 a.m.—3:00 p.m.

Place: Plymouth Bluff Environmental Learning Center

Hosted by the Roger F. Wicker Center for Creative Learning at MUW

Funded by a Congressionally-directed grant through the U.S. Department of Education.





## Camp Invention Comes to Mississippi

Camp Invention, a nationally acclaimed, week-long summer enrichment program, will be available at various sites in Mississippi this summer. Camp Invention is a day camp that is available to students entering grades 1-6. It strives to provide quality enrichment experiences in the fields of science, mathematics, history, and the arts. Local schools host the program and the week's hands on activities are led by local teachers. The staff to child ratio is 1:8. Dates and locations in Mississippi this summer are listed below. To learn more about Camp Invention, or to register, visit their web site at <http://www.invent.org/campinvention/>

School	City	Dates	School	City	Dates
Ackerman Elementary	Ackerman	6/4/07—6/8/07	Louisville Elementary	Louisville	6/4/07—6/8/07
Oakdale Elementary	Brandon	6/4/07—6/8/07	Madison Ridge-land Academy	Madison	7/9/07—7/13/07
Washington School	Greenville	6/11/07—6/15/07	Neshoba Central Middle School	Philadelphia	6/4/07—6/8/07
Westminster Academy	Gulfport	6/25/07—6/29/07	Starkville Academy	Starkville	6/11/07—6/15/07
Oak Grove Upper Elementary	Hattiesburg	6/25/07—6/29/07	Ward-Stewart Elementary	Starkville	6/18/07—6/22/07
USM	Hattiesburg	6/4/07—6/8/07	Bowmar Elementary	Vicksburg	6/4/07—6/8/07
McWillie Elementary	Jackson	6/11/07—6/15/07 6/25/07—6/29/07	Wesson Attendance Center	Wesson	7/9/07—7/13/07

## FREE Online Newsletter for Parents of Gifted Youth

Duke University's Talent Identification Program (Duke TIP), is now offering the *Duke Gifted Letter* online and without charge. This publication provides information for parents of academically gifted children. Duke TIP wants to make the newsletter's material more widely available by publishing the newsletter without a subscription and by including archives of all back-issues on its Web site.

The premiere online issue contains topics such as: developing personal talent, the effect of state-level assessments on gifted students, advocating for a customized gifted education program for your child, motivating boys to succeed, and questions the parents of young gifted children

ask the most, among others.

The *Duke Gifted Letter* online has a searchable database that allows readers to gain quick access to topical information or key questions on the gifted. The blogging element on the web site allows users to comment on articles and engage in dialogue with other readers and the editors.

For more information about Duke TIP visit [www.tip.duke.edu](http://www.tip.duke.edu). The *Duke Gifted Letter* is published by Duke TIP and can be discovered online at [www.dukegiftedletter.com](http://www.dukegiftedletter.com). Contact Bobbie Collins-Perry at (919) 668-9127 or [bcollins-perry@tip.duke.edu](mailto:bcollins-perry@tip.duke.edu) for more information.

## Davidson Institute Offers Scholarships

The Davidson Institute for Talent Development is offering high achieving young people across the country the opportunity to be named as 2007 Davidson Fellows, an honor accompanied by a \$50,000, \$25,000 or \$10,000 scholarship in recognition of a significant piece of work in Science, Technology, Mathematics, Music, Literature, Philosophy or Outside the Box.

To be eligible, applicants must be under the age of 18 as of Oct. 1, 2007, and a U.S. citizen or permanent U.S. resident residing in the United States. There is no minimum

age for eligibility.

The deadline to apply is March 30, 2007. Applicants must submit an original piece of work recognized by experts in the field as significant and it must have the potential to make a positive contribution to society.

The scholarship must be used at an accredited institute of learning. For more information on the Davidson Fellows, or to download an application, please visit [www.DavidsonFellows.org](http://www.DavidsonFellows.org).

# Great Web Resources for Gifted Learners, Parents and Teachers

The Web resources below originally appeared in the Fall 2006 and Winter 2007 issues of *Gifted Child Today*. For more information on this periodical visit their homepage on the Prufrock Press web-site at [www.prufrock.com](http://www.prufrock.com).

## **Sudoku** <http://www.websudoku.com>

Sudoku is a puzzle that is solved by logic. Players enter digits from 1 to 9 into the blank spaces so that every row, column, and 3 x 3 square of the puzzle contains one of each digit. This fun site offers Sudoku puzzles with four levels of difficulty. A JigSawDoku link takes the visitor to an interactive game that is timed and offers hint and help features. Visitors can play as much Sudoku as they want on this Web site.



## **Music to My Ears** <http://www.classicsforkids.com>

This is a wonderful interactive resource for kids where they can learn about music's great composers and even compose their own music. There is a musical dictionary that offers pictures, audible descriptions, and sounds of the different instruments. The Composer Time Machine, Rockin' Rhythm Master, and Note Name games teach youngsters about music in a fun way they will love. Also, the site offers teaching resources based on National Standards for the Arts and state Academic Content Standards for Music. This is a great way for the young Mozart to be immersed in classical music!

## **The Stock Market** <http://library.thinkquest.org/3088>

It's never too early to learn about disciplined investing. Edustock has tutorials on how the stock market works, what a stock is, and how to manage a portfolio. There are also profiles on select companies to help visitors get started in making wise investing choices. The Web site even features a free real-time stock simulation.

## **The Big Mac Index** <http://www.economist.com/markets/Bigmac>

Ever wonder why certain items are more or less expensive depending which country you are in? How about the Big Mac? McDonalds has restaurants all over the globe and uses the same ingredients in all countries, so the signature Big Mac sandwich should cost roughly the same price anywhere you go, right? Take a look at the Big Mac Index to find out. This Web site offers an explanation of exchange rate theory via a short video. The site includes some indexes of hamburger and Starbucks coffee prices around the world. For access to the full index, you must subscribe to the *Economist* magazine, but the free introductory materials offer much ... um ... food for thought.

## **Snow Crystals** <http://www.its.caltech.edu/~atomic/snowcrystals>

Have you ever made a snowman or wondered where snow comes from? Caltech's physics lab offers information on how snow crystals form and why they take different shapes. The Guide to Snowflakes gives details on the different types of snow flakes. This fascinating Web site also offers movies of snow crystals forming!

## **Women's Adventures in Science** <http://www.iwaswondering.org>

This Web site, a project of the National Academy of Sciences, is intended to showcase contemporary women in science. In addition to answering interesting science questions, the Web site features women who work in different fields of science and provides scrapbooks, videos, science labs, books, and interactive cartoons to help viewers learn even more about the women's adventures in science.

## **How Stuff Works** <http://www.howstuffworks.com>

Want to know how many calories you burn while drinking a glass of ice water? Ever wonder how a laptop works? Do you know how to get rid of a black eye? This Web site has answers to these questions and many more, providing useful information for both children and adults. Although visitors can search for information on specific topics, there are links to general areas of interest, including automobiles, science, health, entertainment, travel, electronics, and people. The home page also includes purchasing information and helpful how-to guides. In addition, visitors can shop for Consumer Guide Products with the help of expert reviews, information, and comparative prices.

## **Paper Airplanes** <http://www.funpaperairplanes.com>

This Web site has free downloadable paper airplanes grouped by skill level, with templates ranging from beginner to expert. Airplane designs come with directions and flying tips. This Web site also discusses the mechanics and physics of flying and provides additional educational links for parents and teachers.



## A Great Big Wreck

by Dr. Tony Phillips

People worry about asteroids. Being hit by a space rock can really ruin your day. But that's nothing. How would you like to be hit by a whole galaxy?

It could happen. Astronomers have long known that the Andromeda Galaxy is on a collision course with the Milky Way. In about 3 billion years, the two great star systems will crash together. Earth will be in the middle of the biggest wreck in our part of the Universe.

Astronomer John Hibbard isn't worried. "Galaxy collisions aren't so bad," he says. A typical spiral galaxy contains a hundred billion stars, yet when two such behemoths run into each other "very few stars collide. The stars are like pinpricks with lots of space between them. The chance of a direct hit, star vs. star, is very low."

Hibbard knows because he studies colliding galaxies, particularly a nearby pair called the Antennae. "The two galaxies of the Antennae system are about the same size and type as Andromeda and the Milky Way." He believes that the Antennae are giving us a preview of what's going to happen to our own galaxy.

The Antennae get their name from two vast streamers of stars that resemble the feelers on top of an insect's head. These streamers, called "tidal tails," are created by gravitational forces—one galaxy pulling stars from the other. The tails appear to be scenes of incredible violence.

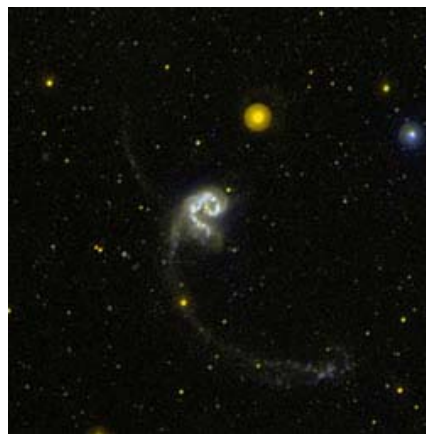
But looks can be deceiving: "Actually, the tails are quiet places," says Hibbard. "They're the peaceful suburbs of the Antennae." He came to this conclusion using data from GALEX, an ultraviolet space telescope

launched by NASA in 2003.

The true violence of colliding galaxies is star formation. While individual stars rarely collide, vast interstellar clouds of gas *do* smash together. These clouds collapse. Gravity pulls the in falling gas into denser knots until, finally, new stars are born. Young stars are difficult to be around. They emit intensely unpleasant radiation and tend to "go supernova."

GALEX can pinpoint hot young stars by the UV radiation they emit and, in combination with other data, measure the rate of star birth. "Surprisingly," Hibbard says, "star formation rates are low in the tidal tails, several times lower than what we experience here in the Milky Way." The merging cores of the Antennae, on the other hand, are sizzling with new stars, ready to explode.

So what should you do when *your* galaxy collides? A tip from GALEX: head for the tails.

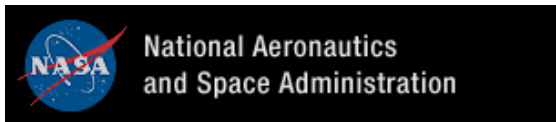


*This GALEX UV image of the colliding Antennae Galaxies shows areas of active star formation, which is not in the tidal tails as one might expect.*

To see more GALEX images, visit <http://www.galex.caltech.edu>. Kids can read about galaxies and how a telescope can be a time machine at [http://spaceplace.nasa.gov/en/educators/galex\\_puzzles.pdf](http://spaceplace.nasa.gov/en/educators/galex_puzzles.pdf).

## New on the Space Place Web Site....

"Dark, scary, and very, very hungry" is the picture most people imagine when they think of a black hole. "Black hole" and "sucked into" seem always to belong in the same sentence. But the latest Space Place Podcast interview with a NASA astrophysicist lays most of these fears to rest. Answering the question "If the Sun were a black hole, would Earth get pulled inside?" Dr. Marc Rayman explains what black holes are, how they form, how common they are, and how we can learn more about them. Go to <http://spaceplace.jpl.nasa.gov/en/educators/podcast/> to subscribe to these Podcasts. Or listen now to this and the previous Podcasts on your computer or read the transcripts.





# Happenings at the Karnes Center

**Summer Gifted Studies Program, June 24-29, 2007**—The Karnes Center is accepting applications for the Summer Gifted Studies Program until 3/31/07. This residential program is open to 4th-8th grade students who have scored 120 or above on an individually administered intelligence test or who have scored at or above the 90<sup>th</sup> percentile on an achievement test. Students will be housed in USM dormitories in Hattiesburg, MS. Tuition includes room, board, activities, and limited accident insurance.

This program is designed to enhance cognitive, affective, and psychomotor abilities of gifted students through enrichment and acceleration activities. Emphasis is placed on individual participation in areas that provide in-depth analysis of specific topics of interest. Students will also have the opportunity to participate in leisure and cultural activities with other gifted youth. Course offerings include Mindpower, Business Leaders: Today and Tomorrow, Inventions, Money! Money! Money!, World Cultural Connections, Design Studio, and Write On! For applications or additional information on the Summer Gifted Studies Program, please visit our website.

**Summer Program for Academically Talented Youth, July 8-27, 2007**—This three-week residential program serves eligible 7th—10th grade students. The program, a cooperative effort with the Duke University TIP Program, provides a balance of educational, cultural, and recreational experiences on the campus of USM. Students participate in quality learning experiences that allow them to progress at a rate and a level appropriate for high-ability students. Course selections include: Precalculus Mathematics, Human Anatomy and Physiology, Forensic Science, Polymer Science, Political Science, Psychology, Criminal Justice, Creative Writing, and Debate. To be eligible, applicants must have earned qualifying SAT or ACT scores as a 7th grader. Required qualifying SAT and ACT scores differ depending on the academic course chosen. The cost of this program is \$1,330. Limited scholarships are available based on financial need. The deadline for application is April 30, 2007. For additional information contact The Karnes Center at the numbers given below.

**Leadership Studies Program, June 17-22, 2007**—Applications are being accepted for the Leadership Studies Program until 3/31/07. This is a residential program designed for 6th—11th grade students who have a desire to develop and enhance their leadership skills and abilities. Avenues for becoming leaders in various settings will be discussed. Students will be housed in USM dormitories in Hattiesburg, MS. Tuition includes room, board, activities, and limited accident insurance.

**Leadership I** is a program with specific emphasis on leadership skills. Training will include those areas necessary for leadership development: fundamentals of leadership, written and oral communication, group dynamics, problem solving, planning, personal skills, and decision making. Avenues for becoming leaders in the school, community, and religious affiliations will be utilized to heighten the awareness and development of leadership potential.

**Leadership II** is a continuation of the program with Leadership I as a prerequisite for entry. It is an intense study to further develop leadership concepts and qualities. Emphasis will be placed on the psychology of leadership, assertiveness training, and situational leadership.

**Leadership III** is an extension of the program with Leadership II as a prerequisite for entry. Training will focus on the legal aspects of leadership, responsibilities of various positions of leadership, developing personal power, and leadership for the future. The students will also have the opportunity for informal interaction with adult leaders.

**Scholarships in Gifted Education**—The Karnes Center has \$500.00 scholarships available for persons enrolled in graduate degree programs in gifted education for the summer of 2007. To qualify, the student must meet the admission requirements of the university for master's, specialist's, or doctoral programs with an emphasis in gifted education. Consideration will be given to graduate students in specialized programs in elementary and secondary schools for the college and university positions in the field of gifted education. For more information contact the Karnes at the numbers given below.

**Advanced Degrees in Gifted Education**—USM and the Department of Curriculum, Instruction, and Special Education, offer a Master's Degree, Specialist's Degree, and a Ph.D. in curriculum, instruction, and special education with an emphasis in gifted education. Five courses are offered for anyone beginning an advanced degree program or in getting certified to teach the gifted.

SPE 560 Characteristics of the Gifted

SPE 661 Methods and Materials for Teaching Gifted Students

SPE 663 Atypical Gifted Students

SPE 664 Practicum with Gifted Students

SPE 662 Curriculum Development in Gifted Education

The Karnes Center has \$500.00 scholarships available for persons enrolled in graduate degree programs in gifted education for the summer of 2006. To qualify, the student must meet the admission requirements of the university for master's, specialist's, or doctoral programs with an emphasis in gifted education. Consideration will be given to graduate students in specialized programs in elementary and secondary schools for the college and university positions in the field of gifted education. For more information contact The Karnes Center at the numbers given below.

## For More Information Contact

The Frances A. Karnes Center for Gifted Studies ▪ The University of Southern Mississippi  
118 College Drive #8207 ▪ Hattiesburg, MS 39406-0001 ▪ (601)266-5236 ▪ fax (601)266-4978  
E-mail: [gifted\\_studies@usm.edu](mailto:gifted_studies@usm.edu) ▪ <http://www.usm.edu/gifted>

# Hall of Honors

## North Gulfport Students Excel in ACE and Roboknights

Two North Gulfport Gifted students placed in the Academic Competition for Excellence (ACE) at St. Stanislaus on December 2nd, 2006. Kendra E. won first place in the 7th grade science category. Kyle S. won second place in the 7th grade social studies category. Ms. Holley and Mrs. Young are the student's gifted teachers.

The North Gulfport Gifted Robotics Roboknight Team competed against twenty coast school teams at Gulfport High School on December 2nd, 2006. North Gulfport won first place. The North Gulfport Team was led by its driver, Joseph E.. The following were the team's members: Brenden P., Dakota S., Ezra T., and Christian K.. Ms. Holley and Mrs. Young were the team's gifted teachers. Steve Phillips, from Dupont, coached the team to victory.

## Biloxi Students Celebrate Becoming Published Authors

Shirley Hardman's gifted classes in Biloxi recently published hardcover books and had an author's tea party to celebrate their achievement. Each student wrote and illustrated a book of poems. These were published through Nationwide Publishing. The students also designed their book covers and title pages.

Following the publication, the class had an author's tea party. The students dressed up and had tea and sandwiches. As part of the tea party, the students read selections from their books. Parents were invited to the party and some brought books for the author's to sign. The students pictured are Angel, Brooke, Kala, Michael, Chase, Zivi, Connor, Brenden and Jesse.



Do you know Mississippi gifted students and teachers that have won honors? We'd like to recognize them in *Concepts!* Just send info and pictures to Lisa Saucier at [lsaucier@jackson.k12.ms.us](mailto:lsaucier@jackson.k12.ms.us) or 1120 Riverside Dr., Jackson, MS 39202.

### Wanted AND Needed:

- MAGC wants AND needs more involvement from parents of gifted children. Want to become involved? Start a local parent affiliate group in your school district. All it takes is a dedicated parent who is willing to "get the ball rolling"! Affiliate groups have a BIG impact on the education of gifted children in our state. If you're interested in starting an affiliate group in your community, contact Debbie Holt for additional information.
- If you already have an affiliate group in your local district, please make sure that your membership dues and membership list have been forwarded to Debbie Holt. We need AND want the name and address of each member of your affiliate group in order to maintain a current mailing list.
- If you're organized, creative, enthusiastic or if you just enjoy working with other gifted educators around the state, you're invited to become a part of the planning committee for the annual MAGC conference. Just email Teresa Mosley at [tmosely@jackson.k12.ms.us](mailto:tmosely@jackson.k12.ms.us) and let her know you're interested! You're wanted AND needed!



**SENG**

Supporting Emotional Needs of the Gifted

Interested in learning about the emotional needs of the gifted? A great resource is SENG. SENG is "dedicated to fostering environments in which gifted adults and children, in all their diversity, understand and accept themselves and are understood, valued, nurtured and supported by their families, schools, workplaces, and communities." The SENG conference will be held July 13-17 in Kansas City. To get more information about this organization and to sign up for a free email newsletter, visit [www.sengifted.org](http://www.sengifted.org).



# Nicholas Green Distinguished Student Award 2006-2007 School Year

(Application Packets must be postmarked by May 15, 2007)

MAGC is pleased to announce the continuance of the NAGC-Nicholas Green Distinguished Student Awards for the 2006-2007 school year. The awards are designed to recognize excellence in young children. The awards, which include a \$500 U.S. Savings Bond, may be made to students in grades 3-6 who have distinguished themselves in academics, leadership, or the arts. Nominations will be accepted from the students themselves, parents, teachers, peers, and community and civic groups.

## Selection Criteria:

- Students must be in grades 3 through 6 at the time of the nomination.
- Outstanding student accomplishment may be in the areas of academics, the arts, or leadership.
- Student applicants must submit a written composition about why they feel their effort is important and how they got interested in the area for which they are being recognized. Compositions should describe (1) the activity or interest area for which the student is being nominated; (2) how the student got interested/involved in the activity; (3) what impact the activity has had on the student and on others; and (4) how the student's future plans and goals have been affected by this activity or interest area.
- At least one letter of recommendation, from someone other than a nominee's family member, explaining why the student nominee is deserving of the award, what sets him/her apart from other students, and how the student is impacting others.

## Submission to MAGC:

- Completed Student Nomination Form including the signed publicity release form.
- Copy of the student's composition.
- Letter(s) of recommendation.
- Self-addressed, stamped postcard, which will be used to acknowledge receipt of the application packet.

Mail completed packets to: Joyce Youngblood 60 53<sup>rd</sup> Street, Gulfport, MS 39507

## Nicholas Green Distinguished Student Award Application Form 2006-2007

Student Name \_\_\_\_\_ Social Security # \_\_\_\_\_

Address \_\_\_\_\_

Phone Number \_\_\_\_\_ E-mail \_\_\_\_\_

Age \_\_\_\_\_ Birth Date \_\_\_\_\_ Grade at Time of Application \_\_\_\_\_

School Name and Address \_\_\_\_\_

Teacher's Name \_\_\_\_\_ Name of Parent/Guardian \_\_\_\_\_

Name of Person Nominating Student \_\_\_\_\_ Phone \_\_\_\_\_

Address \_\_\_\_\_

Relationship to Nominee \_\_\_\_\_ E-mail \_\_\_\_\_

**Release Form:** I hereby give the National Association for Gifted Children permission to use my child's photo\* and composition, submitted in connection with the NAGC Nicholas Green Distinguished Student Award, in any publicity or announcements NAGC may make about the award or the award winners, should my child be selected for the award. I further grant permission to NAGC to use my child's name, school name, and city/state in any publicity or announcements that uses his/her photo or composition, and to make edits to the length of the composition as may be necessary. I understand that neither my child nor I will receive any remuneration in connection with this permission and understand that the photo and the composition will not be returned to me.

Signature \_\_\_\_\_ Printed Name \_\_\_\_\_

Address \_\_\_\_\_

Phone \_\_\_\_\_ E-Mail \_\_\_\_\_ Relationship to Nominee \_\_\_\_\_

\*NAGC will request a photo of the award winners for use in award publicity and announcements. Do not send a photo with the application packet.

**Mississippi Association for Gifted Children  
Summer Gifted Studies Program Scholarship Nomination Form**

**(Deadline: March 15, 2007)**

Nominee's Name: \_\_\_\_\_  
(Prior MAGC scholarship recipients are not eligible to receive this award)

Address: \_\_\_\_\_

Nominating Teacher: \_\_\_\_\_ School: \_\_\_\_\_

School Address: \_\_\_\_\_

Grade: \_\_\_\_\_ Age: \_\_\_\_\_ Program Choice: \_\_\_\_\_  
(Must be a Mississippi program)

Signature of Nominee: \_\_\_\_\_

**To the Nominating Teacher:**

**Please include the following information with this nomination form:**

1. A narrative describing student's special interests, school and community involvement, honors, and your reasons for nominating this student; indicate a financial need
2. A copy of the student's G.P.P.D.S. verifying eligibility; and
3. A narrative from the student stating his/her areas of interest and choice of program if awarded the scholarship.
4. Additional letters of support may be included.

Please mail completed nomination form and other required attachments to:

**Joyce Youngblood  
60 53<sup>rd</sup> Street  
Gulfport, MS 39507**

**Thank you for taking advantage of this opportunity for your students.**

# Mississippi Association for Gifted Children

Teacher Grant Application - Deadline: April 15, 2007

The MAGC Executive Board will award two grants this year of up to \$300 for course study. One grant will be presented to an experienced teacher or administrator with gifted certification to pursue additional training in gifted education. The other will be awarded to an experienced regular classroom teacher to pursue gifted certification. The grants will be forwarded to the recipient upon verification of course completion and are limited to actual cost of the course, up to \$300. Additionally, the Gail P. Hammond Teacher Scholarship, carrying an award of \$500, will be awarded to an exceptional regular classroom teacher currently enrolled or planning to enroll in a course of study leading to certification in gifted education. Previous grant/scholarship recipients are not eligible for these awards, and recipients may receive only one scholarship/grant from MAGC. Recipients are expected to attend the annual state conference in the fall of the year in which the grants/scholarships are awarded.

## **ELIGIBILITY REQUIREMENTS: (Please check all grants/scholarships for which you are eligible)**

### **GRANT FOR TEACHER/ADMINISTRATOR WITH GIFTED CERTIFICATION**

Applicants must:

1. Be an active MAGC Member or submit \$25 membership fee upon application.
2. Have at least two years of teaching experience in the area of gifted education,
3. Be currently enrolled or planning to enroll in a course/workshop for advanced study of gifted education, &
4. Have a history of attendance at conferences and/or workshops that pertain to gifted education.

### **GRANT FOR TEACHER TO PURSUE GIFTED CERTIFICATION**

Applicants must:

1. Be an active MAGC Member or submit \$25 membership fee upon application.
2. Have at least two years of teaching experience in the regular classroom, and
3. Be currently enrolled or planning to enroll in a course of study for certification in gifted education.

### **GAIL P. HAMMOND TEACHER SCHOLARSHIP**

Applicants must:

1. Be an active MAGC Member or submit \$25 membership fee upon application.
2. Have at least two years of teaching experience in the regular classroom, and
3. Be currently enrolled or planning to enroll in a course of study for certification in gifted education.

Teacher's Name: \_\_\_\_\_

Address: \_\_\_\_\_

Name of School/Address: \_\_\_\_\_

Home Phone: \_\_\_\_\_ Work Phone: \_\_\_\_\_

## **Please Attach the Following:**

1. At least two letters of recommendation/support from a superintendent, principal, program coordinator, and/or other supervisory personnel,
2. Autobiographical statement (200 words or less) describing areas of interest, honors, achievement, and past experiences of workshop and conference attendance, and
3. Brief description of the course/workshop for which the grant would be used.

Please mail completed nomination form and other required attachments to:

Joyce Youngblood  
60 53<sup>rd</sup> Street  
Gulfport, MS 39507

# Call for Proposals: 2007 MAGC Conference

The conference will be held **September 27-28, 2007** at *The Regency Hotel and Conference Center, Jackson, Mississippi*. Completed proposals must be post marked no later than **June 30, 2007**. *You must be a member of MAGC to present*. Please update your membership before submitting. Note that the conference registration fee will be waived for only **the main** presenter per session.

Name \_\_\_\_\_

Institution Affiliation \_\_\_\_\_ Position/Job Title \_\_\_\_\_

Home Address \_\_\_\_\_  
(street) (city/state) (zip code)

Email \_\_\_\_\_ Telephone \_\_\_\_\_

The title of my proposed presentation is: \_\_\_\_\_

Below is a typed abstract (75 words or less) of the concurrent session I wish to present.

Co-presenter: \_\_\_\_\_ (Registration fee will **not** be waived.)

## CATEGORY for PRESENTATION

- \_\_\_ Social/emotional needs of gifted students
- \_\_\_ Differentiating curriculum and instruction
- \_\_\_ Creativity and/or the arts
- \_\_\_ Evaluating student progress
- \_\_\_ Special populations
- \_\_\_ Developing leadership
- \_\_\_ Other \_\_\_\_\_

## Intended AUDIENCE for PRESENTATION

- \_\_\_ Elementary Teachers
- \_\_\_ Secondary Teachers
- \_\_\_ Parents of Gifted Children
- \_\_\_ Administrators and/or counselors
- \_\_\_ Other \_\_\_\_\_

Mail form to: **Teresa Mosley, 317 Concord Dr. Clinton, MS 39056 601-924-4476**  
*tmosely@jackson.k12.ms.us*

**Elected Officers:**

**President:** Margaret Snider  
1007 Camdenmill Dr., Ridgeland, MS 39157  
(601)856-4655  
msnider@jackson.k12.ms.us

**Secretary:** Sherry Willis  
1013 John Allen Drive Baldwyn, MS 38824  
(662)365-2283  
sherry@rcrotorworld.com

**Standing Committee Chairs:**

**Membership:** Carol Paola  
1513 Westward Dr., Gulfport, MS 39501  
(228)864-8520 fax (228)868-6448  
cwp1gab@aol.com

**Public Relations:** Kenneth Griswold  
3063 Plantation Cr., Tupelo, MS 38804  
(662)841-0907  
kmgriswold@tupelo.k12.ms.us

**Supportive Funding:** Wendy Hunt  
7875 Idlebrook Cove, Southaven, MS 38671  
(662)342-7214 (662)280-7075  
wendyfoz@bellsouth.net

**Ad Hoc and Ex Officio:**

**Website:** Ivey C. Ivy  
1100 College St.—MUW 1635, Columbus, MS 39701  
(662)329-7159 (662)329-7242 fax  
livy@muw.edu

**President-Elect:** Teresa Mosley  
317 Concord Dr., Clinton, MS 39056  
(601)924-4476 fax (601)973-8682  
tmosely@jackson.k12.ms.us

**Treasurer:** Pamela Pape  
143 Skyline Drive, Clinton, MS 39056  
(601)925-4580  
ppape@jackson.k12.ms.us

**Concepts Editor:** Lisa Saucier  
1120 Riverside Dr., Jackson, MS 39202  
(601)373-9401 (601)960-5387  
lsaucier@jackson.k12.ms.us

**Affiliates:** Deborah Holt  
18032 Allen Rd., Long Beach, MS 39560  
(228)868-8644  
deboraholt@aol.com

**Advisory Board:** Suzanne Bean  
86 Big Tom Rd., Columbus, MS 39705  
(662)241-6101 Fax (662)329-7242  
sbean@muw.edu

**Ex Officio:** Dr. Conrad Castle  
MS Dept. of Education  
P.O. Box 771, Suite 306, Jackson, MS 39205  
(601)359-2586 fax (601)359-2040  
ccastle@mde.k12.ms.us

**Vice President:** Joyce Youngblood  
60 53rd Street, Gulfport, MS 39507  
(228)868-6885 (228)860-8061  
Jly1272@aol.com

**Past President:** Kate Brown  
1021 12 St. North, Columbus, MS 39701  
(662)329-7676 fax (662)329-7242  
kateb@muw.edu

**Staff Development:** Melissa Grantham  
69 Redbud Lane, Madison, MS 39110  
(601)853-2764 (601)879-3069  
Mgrantham@madison.k12.ms.us

**Legislative:** Kathy Henry  
One Paw Print Place, Brandon, MS 39047  
(601)992-1329 (601)992-4110  
Kathy.henry@rcsd.ms

**Legislative Co-Chair:** Kay Collins  
430 N. Church St., Tupelo, MS 38804  
(662)844-4549 (662)401-5396  
kgcollins@tupelo.k12.ms.us

**Permanent and Founding Member:** Dr. Frances Karnes, Hattiesburg

**MAGC**

P.O. Box 3545  
Jackson, MS 39207  
www.msms.k12.ms.us/MAGC

PRESORTED  
FIRST CLASS MAIL  
U.S. POSTAGE  
**PAID**  
JACKSON, MS  
PERMIT NO. 80